



12 REPORTS

12.1 Chronological Reports

From the main menu select *Report | Chronological Reports*.

These are summary reports pertaining to various stages of processing of a line and are written to text files in the line database folder. This folder is created when a P2 is input, under the designated database location as seen in the project details, and is named after the line name recorded in the P2.

Each time a process is executed a new report file is written with the naming convention:

Process#.txt

Where *Process* is the type of report e.g. *precon*, *adjust* etc. and *#* is the number of the report and is incremented each time a new report is generated.

When a line is deleted from the database the report files are also deleted. If any of these are required for archiving then they should be copied or moved to a new location prior to deleting the line.

When reports are invoked from the menu the one with the highest number is opened. Previous reports can be opened from the report window by clicking the right mouse button and selecting *Open* from the popup menu.

With the exception of the Precondition Summary and Compass Bias reports all reports can also be opened directly from the report menu in the Network Adjustment module.

The following reports are available:

- Shot Report
- Node report
- Precondition parameters
- Precondition summary
- Compass biases
- Adjustment summary

For network observations:

- Residuals
- Normalised residuals
- Marginally detectable errors

For network nodes:

- Semi-major axis – 95%



External reliability
Number of observations per node

Output

12.1.1 Shot Report

This report is generated from the database in its current state, and reports the following:

First shot

Last shot

Number of shots

Shot number exceptions i.e. missing or extra shots

Shot time exceptions i.e. shot intervals outside the range:

average interval \pm half average interval

12.2 Rejected Observation Report

From the main menu select *Report | Rejected Observation Report*.

This report lists the number of lines in the project for which each observation is rejected. Observations which have no rejections are not included.

12.3 Line Log

From the main menu select *View | Log*.

The line log for each line is created when a P2 is input. The log is located in the designated database folder as seen in the project details. When a line is deleted from the project the log is not deleted. The log is of the naming convention:

Line_name.LOG

Where *Line_name* is the name of the line as recorded in the P2.

Recorded in the log are all events and actions which occur during processing of the line, including warnings, format violations and comments recorded in the P2. These can be viewed from the main menu under *View*. When viewing warnings, format violations and comments only the relevant lines of the log are extracted and displayed. For this reason it is not advisable to edit the log file in any way.

The log windows which appear in the main SeisPos window when running the Input, Network Adjustment and Output modules contain the same information that is written to the log.



12.4 Report Popup Menu

Num	Name	N_Obs	Mean	Nominal
295	g01t02-g01t01_R	556	5.539	5.192
296	g01t02-g02t01_R		6.459	27.259
297	s06t01-s05t01_R		6.280	64.901
298	s06t01-s05t02_R		7.821	108.048
299	s06t01-s06t02_R		6.508	86.384
300	s06t01-s04t02_R		3.067	155.919
301	s06t03-s05t03_R		0.000	64.901
302	s06t03-s06t04_R		4.733	64.772
303	s06t03-s05t04_R		3.810	91.693
304	s06t03-s04t03_R		4.383	129.803
305	f06t01-s06t06_R		7.602	63.252
306	f06t01-s05t05_R		0.723	143.459
307	f06t01-f05t01_R		9.685	64.901
308	f06t01-s04t06_R		9.568	144.394

Figure 12-1

- Previous:* Open the previous report. Applies only to multiple reports with the naming convention file_name.xx.txt where xx is a sequential report number.
- Next:* Open the next report. Applies only to multiple reports with the naming convention file_name.xx.txt where xx is a sequential report number.
- Find:* Opens the *Find* dialog.
- Replace:* Opens the *Replace* dialog.
- Select All:* Selects all text.
- Copy:* Copies highlighted text to the clipboard.
- Paste:* Pastes contents of clipboard at current cursor position.
- Print:* Sends to printer.
- Save As:* Opens the *File Save* dialogue box, the default folder is the designated database folder.
- Open:* Opens the *File Open* dialogue box. When a new file is opened the contents of the report window are discarded without saving. The default folder is the designated database folder.
- Close:* Closes the report window.

12.5 Final Report

From the main menu select *Report | Final Report*.



Unlike the *Chronological Reports* the *Final Report* re-computes the statistics from the database so that the report reflects the actual, *final*, state of the process.

To illustrate this point, assume for example that a line has been adjusted in several parts, none of which included the entire shot range. Then each of the chronological adjustment reports will reflect only the portion of the line adjusted. When generating the final report however, all data is re-read from the database so that the statistics reported are an accurate reflection of the whole line.

The only exceptions to this are for the Compass Bias report and the Output report, for which the latest chronological reports are used.

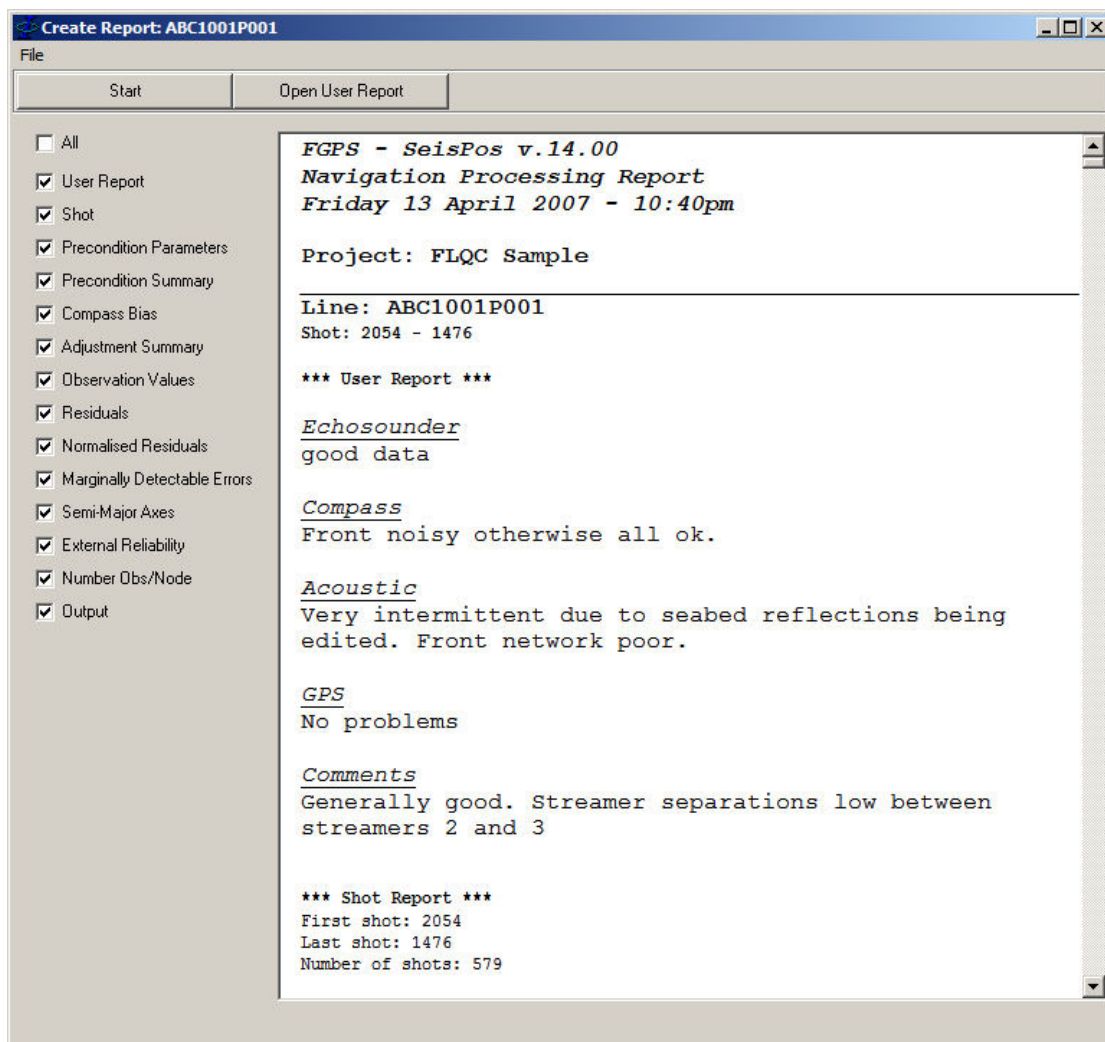


Figure 12-2

The report is compiled from the individual reports selected from the list on the left. The user report is created as described in To generate multiple line reports, from the menu select *File / Select Lines*. Each report is saved to a separate file.

The report files are saved in Rich Text Format, under the *Project Database Folder* and are named according to the following convention:



Line_name_proc_report.rtf

User Report below.

To generate multiple line reports, from the menu select *File | Select Lines*. Each report is saved to a separate file.

The report files are saved in Rich Text Format, under the *Project Database Folder* and are named according to the following convention:

Line_name_proc_report.rtf

12.5.1 User Report

To open the *User Report* click the *Open User Report* button. The report can also be opened from the main menu by selecting *Report | User Report*.

The *User Report* is an unformatted document which can be edited and formatted by the user. The report is saved in Rich Text format, and is named according to the following convention:

Line_name_user.rtf

Note: if the report name is changed it will not be incorporated in the line report.

Basic word processing functions are supported.
