



17 UTILITIES

17.1 Extract P2

This module enables the extraction of the header and a specified range of shotpoints from a UKOOA P2 file.

From the main menu select *Utilities | Extract P2*.

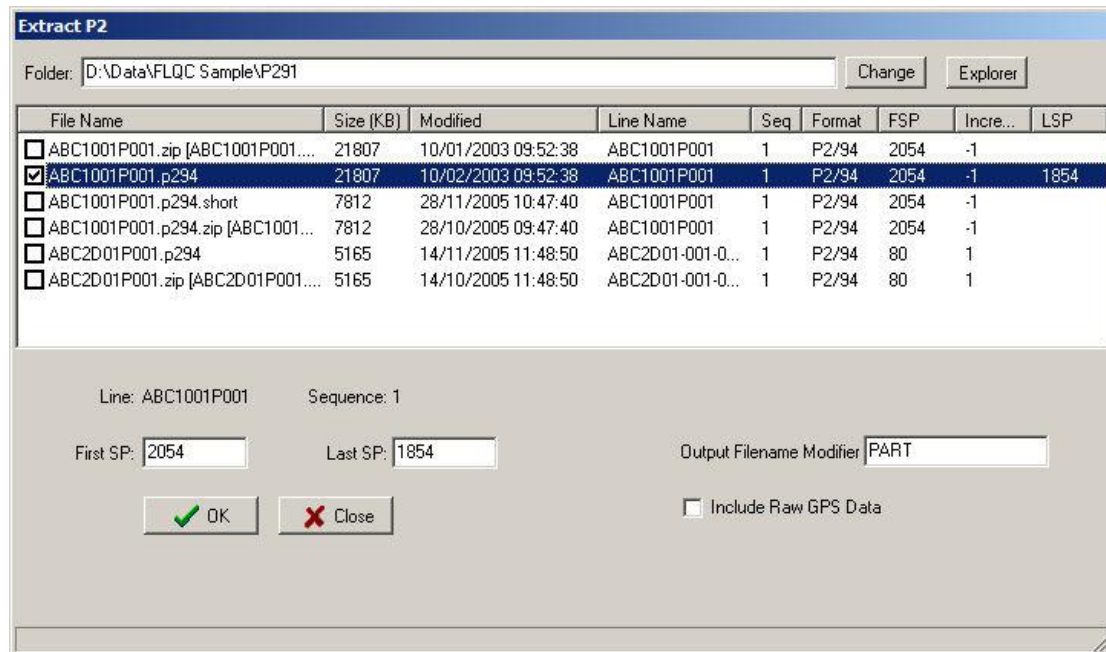


Figure 17-1

The default folder is that specified in the project as the P2 folder.

Files for output must be selected by checking the checkbox at the left of the list.

The required shotpoint range for each file is specified in the *First SP* and *Last SP* fields.

The *Output Filename Modifier* is inserted into the filename before the filename extension. For example, the output from highlighted file in Figure 17-1 will be called :

ABC1001p001.PART.p294

If raw GPS data is not required then the size of the output will be reduced by leaving the *Include Raw GPS Data* option unchecked.

17.2 Split P2

This utility splits a single file containing multiple P2 datasets into individual files each containing a single P2 dataset.



From the main menu select *Utilities | Split P2*.

From the Open File dialog select the file of files required to split.

The output files are saved in the same folder as the input files, and are named according to the following convention:

###-name.p2

Where

= the sequence specified in the H0000 record
name = the line name specified in the H0000 record

“.1” will be appended to this name if a file of this name already exists.

Once processing is complete a Windows Explorer window is opened at the location of the output files.

17.3 Explorer

This utility opens a Windows Explorer window which defaults to the *Project Database Folder*.

From the main menu select *Utilities | Explorer*.
