



2. PROJECTS

Before SeisPos can be used a project must be created. The project defines the P2, P1 and database file locations, and maintains a list of lines along with their basic attributes. Up to 200 projects can be defined. Typically a project should be used only for lines from the same survey, contractor, client, vessel and configuration.

Note: If, during the course of a survey the navigation configuration is changed e.g. nodes or observations are added, removed or altered, a new project should be started. However, for advanced users this may not be necessary provided the number and order of nodes and observations has not changed.

2.1 Project file

The parameter file, *SeisPos.prj*, is automatically created in the SeisPos program folder. This file contains all project information and file locations. The file is updated whenever changes are made to any project, or a line status changes. If this file becomes corrupted or is missing problems will result and it will be necessary to revert to a backup project file.

Each time a line is input the project file is first backed up to a folder called *Project*, which resides in the SeisPos program folder. The backup files are named by the year, month, day and incremental number. Should the project file, *SeisPos.prj* become corrupt then the most recent backup file should be copied to the SeisPos program folder and renamed to *SeisPos.prj*.

2.2 Creating a Project

The screenshot shows the 'New Project' dialog box with the following fields and values:

- Project Name: Survey
- P2/9x Directory: d:\Survey\P2
- Database Directory: d:\Survey\Database
- P1/90; SPS Directory: d:\Survey\SPS
- FBComp Directory: d:\Survey\Acoustics
- SPS v2.1: Line number from line name : start column: 3 length: 4
- Acquisition System: GATOR RECEIVER
- Recent Projects: Hugin hires 090908

Figure 2-1

From the main menu select *Project | New*, and enter the following parameters:

Project Name: Enter suitable Project Name, maximum 63 characters.



- P2/9x Directory:* Default folder to search for P2 files.
- Database Directory:* The *Project Database Folder* where line log files and project-wide parameter files will be kept. Individual *Line Database Folders* named by the line name found in the P2 file will be created in this folder.
- P1/90 Directory:* Default folder for output of P1/90 or SPS files produced by SeisPos.
- FBComp Directory:* Default directory for output of acoustic data for use in the SPSPro FBComp module. This option is only available when the acquisition system is set to GATOR RECEIVER.
- SPS v2.1:* When exporting acoustics for use in the SPSPro FBComp module the line number is taken from the line name in the P2. Enter the start position and length of where the line number appears within the line name. This option is only available when the acquisition system is set to GATOR RECEIVER.
- Acquisition System:* Select the navigation acquisition system from the drop-down list. If the contractor does not appear in the list select SPECTRA. This is used to aid in decoding the P2 file according to various contractor's differences in dealing with shortcomings in the P2 format, or differences in acquisition software.

If the specified folders do not include the full path then they will be created under the current working folder. The next time the Project dialog is opened the absolute paths will be shown.

To use an existing project as a template for a new project select it from the *Project Name* list or *Recent Projects* list then edit the fields as required.

Warning: Do not create a project specifying the same database folder as an existing project.

Click the *OK* button. If any of the specified folders do not exist they will be created. The newly created project will become the current project, and its name and the number of lines held (none at this stage) will be displayed in the status bar of the main SeisPos control panel.

2.3 Opening a Project

Before any action can take place the appropriate, previously created, project must be opened. This then becomes the current project and its name and the number of lines held will be displayed in the status bar of the main SeisPos control panel.

From the main menu select *Project / Open*. Select a project from drop-down list of project names, or from the drop-down list of the eight most recently opened projects.

All lines contained in the project will be shown in the line list at the bottom of the panel. No editing of the project can be performed at this time.



Click the *OK* button to open the project and exit the Project dialog.

Note: While processes on a project are running another project can be opened so that processes on multiple projects can be performed simultaneously. The number of simultaneous processes possible depends on process type and system resources. The currently tested limit is 3 projects.

2.4 Editing a Project

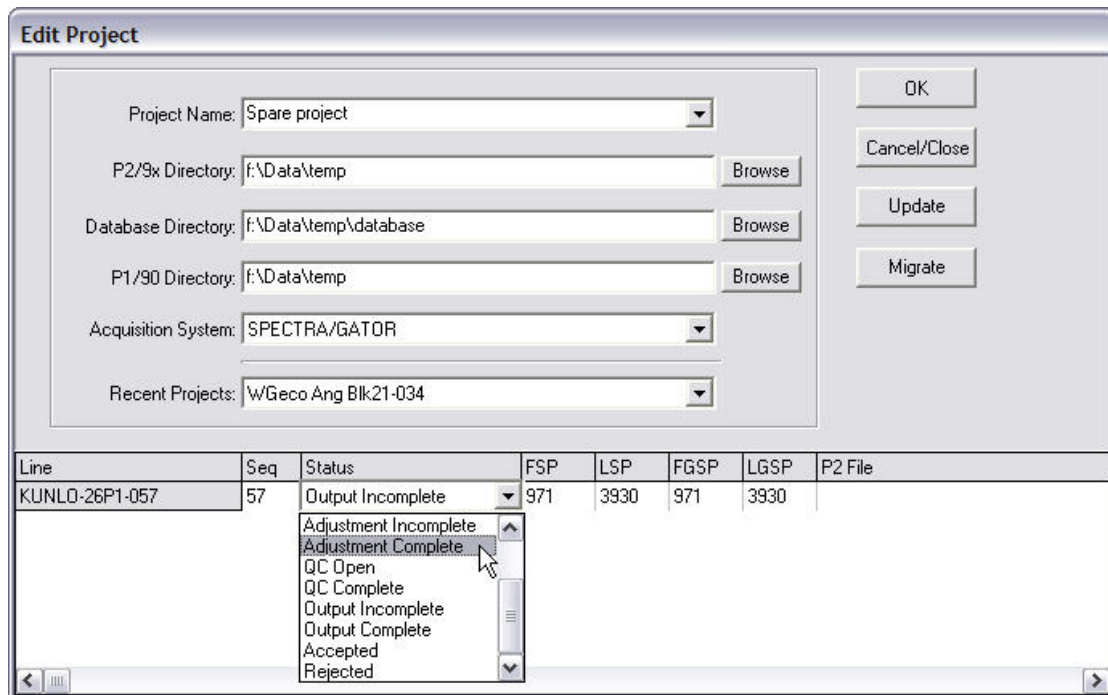


Figure 2-2

From the main menu select *Project | Edit*.

Although it is not advisable, any of the project attributes can be altered. However, if the Database directory is changed then this change will affect only lines input from that time onwards. Subsequent attempts to perform any processing on a previously input line will result in file errors, and the Database directory should then be reverted to the original. Click on *OK* to accept changes, or *Close/Cancel* to revert to the previous attributes.

2.4.1 Deleting Lines

To delete lines highlight the lines with the mouse then click the right mouse button. From the popup menu select *Delete Database Files*. The program will prompt to confirm deletion before the lines are deleted. On deletion all database files pertaining to the deleted lines, except the log file, will be deleted, along with the line folder. A line in a project which has active processes can not be deleted. All processes for that project must first be stopped before deletions will be allowed.



Warning: *this action cannot be undone – the Close/Cancel button does not cancel these changes.*

2.4.2 Editing Line Attributes

Right click on the line status field and select from the popup list the desired line status from one of the following:

- Inputting
- Input
- Preconditioning
- Preconditioned
- Adjusting
- Adjusted
- QCing
- QCed
- Outputting
- Output
- Accepted
- Rejected

The line status is mostly used for book-keeping purposes.

Changing a line status to Input from a more advanced status will result in the default precondition parameters being re-applied on subsequent precondition of that line. This is useful if the default parameters have been changed while preconditioning a different line and it is desired to apply the new values to a line previously preconditioned.

2.4.3 First and Last Good Shotpoint

The first and last “good” shotpoint can be set to the required range. This range will then be the default shotpoint range for the following modules:

- Compass Bias Estimate
- Network Adjustment
- Quality Control
- Output
- Printing Plot Configurations
- Trend Analysis

2.4.4 Update

The update button is used to synchronise the SeisPos project lines with the actual data residing on disk. New line databases found on disk will be added to the project. Project lines for which line databases have been manually deleted will be removed from the project.

This is useful, for example, if a line database folder has been sent from the field to the office. The new folder should be copied to the *Project Database Folder* before using the *Update* facility.



2.4.5 Migrate

The migrate function enables the location of projects to be changed if, for example, one or more project folders have been moved from a disk or parent folder to another, or copied to a backup drive.

The action involves a simple search and replace which is carried out on all project folder specifications.

Note: This action changes only the project specifications and does not move the actual data on disk.

2.5 Deleting a Project

From the main menu select *Project | Delete* and select a project from drop-down list of project names. Click the *OK* button to delete the project, or *Cancel*. Before deletion a prompt will appear to confirm the action. The entire project will be permanently removed from the hard disk.

The current project cannot be deleted.

Warning: *This action cannot be undone once the OK button has been pressed.*

2.6 Project Log

A project log, "Project.log", is maintained in the Project folder. Each time a process is carried out an entry is made in this log. The project log can be viewed by selecting *Project | Log* from the main menu.
